

## HCS Industrial Melbourne

**Bogie Hearth Furnaces.**

**Top Hat Furnaces.**

**Ladle Pre-heaters.**

**Dry-out Rigs.**

**Incinerators & Cremators.**

**Burner upgrades.**

**Energy & Safety Audits.**

**Breakdown Service.**

**Licensed Type B personnel.**

Combustion Engineering of any process, and conversion of burners & management systems, in order to maximize energy use whilst reducing energy costs.

Conversions -Electric to Gas, LP Gas to Natural Gas, Oil to Gas options are available.

Preheated Combustion air, or Self-Recuperative burner options.  
Pulse firing systems.

Energy & Safety Audits of your plant, to identify areas that need attention.

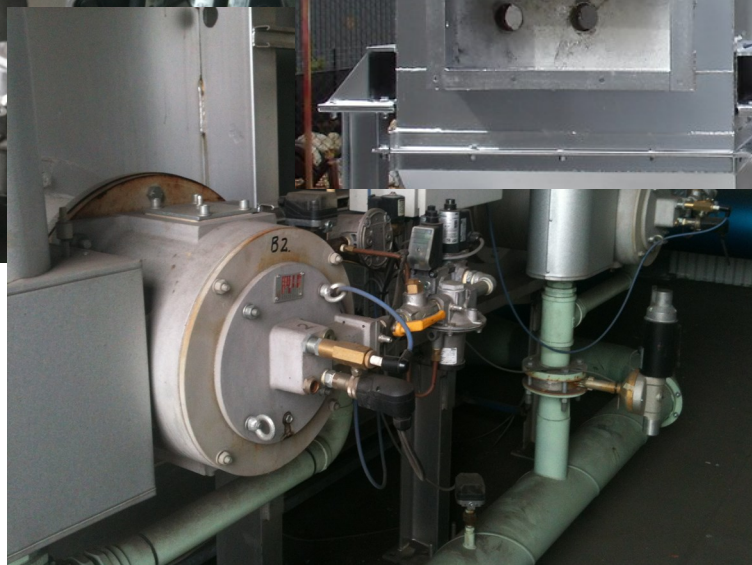
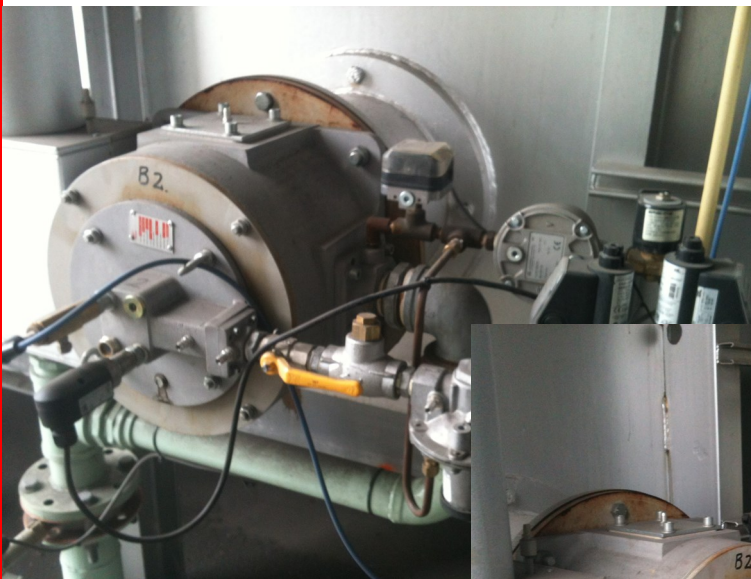
Contact us for your requirements.

16/5 Samantha Ct  
Knoxfield 3180  
Victoria Australia

Phone: +61 417 137 587

Fax: +61 3 9763 5656

E-mail: [tim@hcsindustrial.com.au](mailto:tim@hcsindustrial.com.au)



Specialists in providing Industrial Combustion Engineering solutions; the Design Installation & Fabrication of Industrial Furnaces & Ovens; and Process Control Solutions.